



SOUTH NATION
CONSERVATION
DE LA NATION SUD

Project Update

October 17th, 2024





New Staff: Inga Dittmann

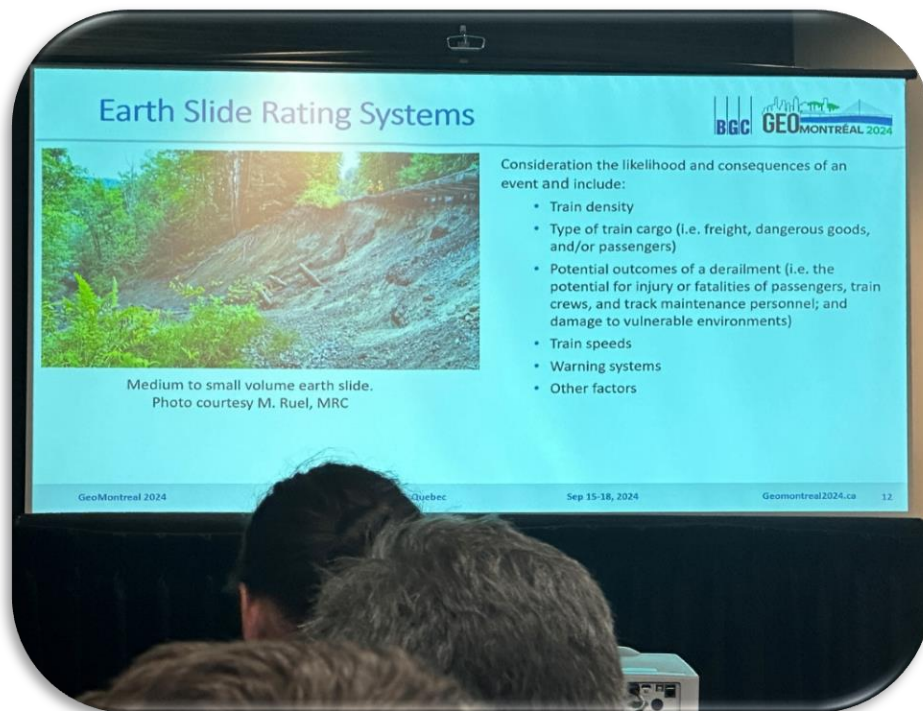


Installing Tubex on a private property

- Bachelor under-graduate in forestry management at the Rottenburg School of Forestry, Germany
- August 12th - October 25th internship at SNC as part of the practical semester in the program
- Enjoy cooking, travelling, and outdoor activities



GeoMontreal 2024 Conference



- Mid-September 2024, in Montréal, Québec
- Focused on geohazards and landslides
- Learned about hazard mapping, mitigation measures, and slope monitoring using various tools
- Attended by several representatives from both the public and private sectors



The Healing Place Reconciliation and Thanksgiving Harvest





Flood Forecasting and Warning Workshop



- Provincial workshop held annually
- Attended by the Provincial and Conservation Authorities Staff
- Refreshing on the Legacy of Hurricane Hazel - 70 years



Latonnell Conservation Symposium 2024

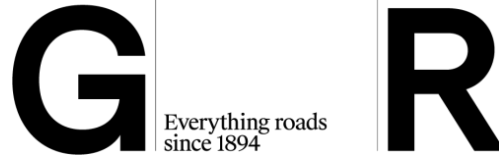


- Annual event hosted by Conservation Ontario and the University of Guelph
- Attended by conservation authorities, municipalities, private sector, government agencies, and academia
- Theme: “Collaboration”





2025 Conference Season is coming...



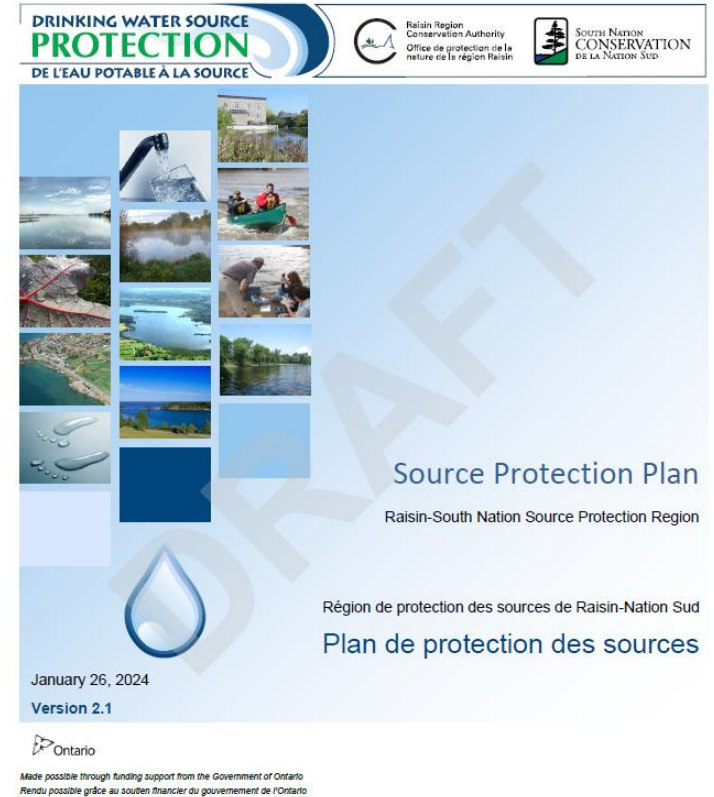
- Time to plan for 2025 conference season!
- Contact Meaghen for assistance with registration, travel, and accommodation bookings

And so many more!



Consultation: Drinking Water Source Protection

- Updated policies have been drafted for the storage of fuel, snow and salt
- Pre-consultation is now in progress
- Public consultation will begin after pre-consultation is complete, likely with an online information session
- Feedback forms and meeting request links are available at yourdrinkingwater.ca/consultations





Trail Management: Robert Graham Forest CA

- Continued trail and tree management in SNC Conservation Areas
- Trail improvements and buckthorn control at Robert Graham Forest





Woodlot Storm Recovery Program Update: Re-establish Access



Re-establish access
Private site in Clarence-Rockland



Re-establish access
Private site in Ottawa



Woodlot Storm Recovery Program Update: Salvage Operation



Salvage operation
Private site in Alfred-Plantagenet



Salvage operation
Private site in Alfred-Plantagenet



Woodlot Storm Recovery Program Update: Site Preparation



Site prep for fall 2024 planting
Private site in Alfred-Plantagenet



Site prep for fall 2024 planting
Private site in Alfred-Plantagenet



Woodlot Storm Recovery Program Update: Tree Planting

- Over 32,000 trees planted this fall (Clarence-Rockland and Alfred-Plantagenet)
- 18 different native species planted





Woodlot Storm Recovery Program Update: Tending



Tree planting project with protectors installed
on hardwood species
Private site, Clarence-Rockland



Tree planting project with protectors installed
on hardwood species
Private site, Alfred-Plantagenet



Municipal Partnerships

Figure 1 – Location of identified healthy Black Ash trees.



- SNC completed a Black Ash health assessment for the Township of South Stormont
- SNC has forestry and species at risk experts available to assist municipalities



Stormwater Management Ponds - Operation and Maintenance



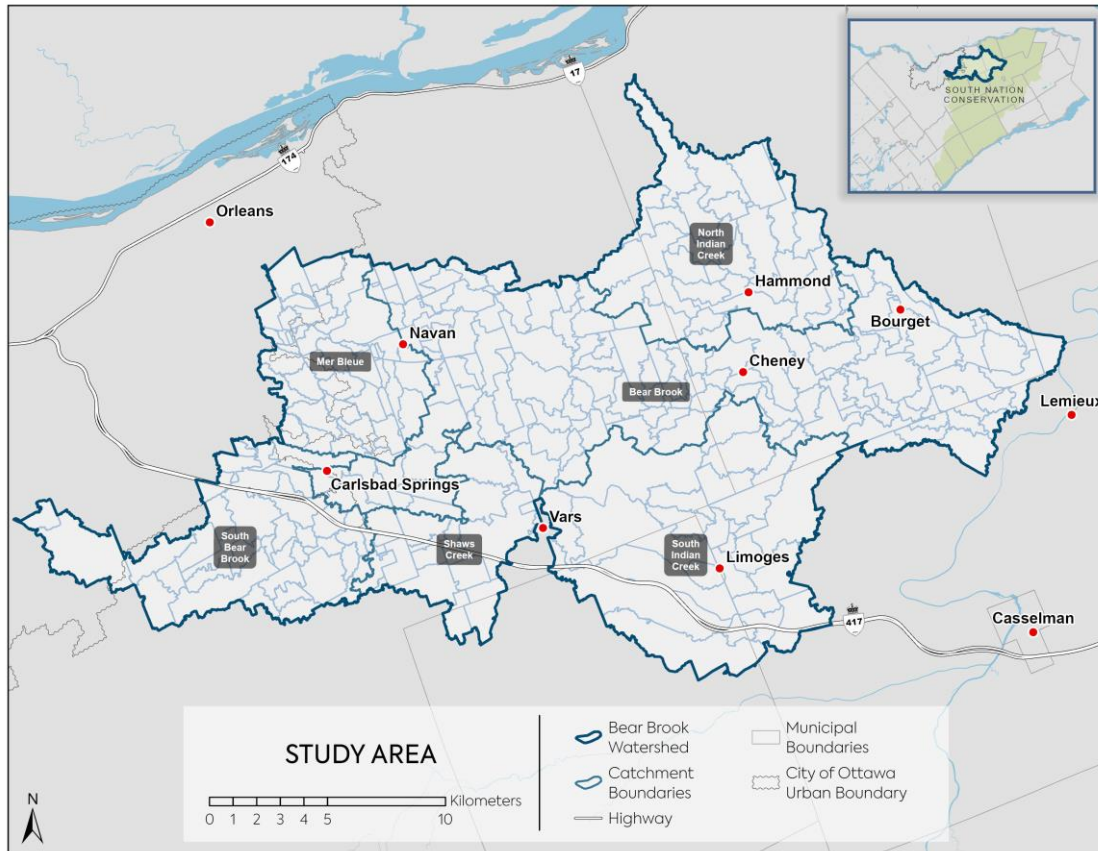
Quartier des Boises Subdivision SWMP, Casselman

“New” service available to partnered municipalities

- Pond operation
- Winter operation
- Equipment and facility operation and maintenance
- Facility monitoring



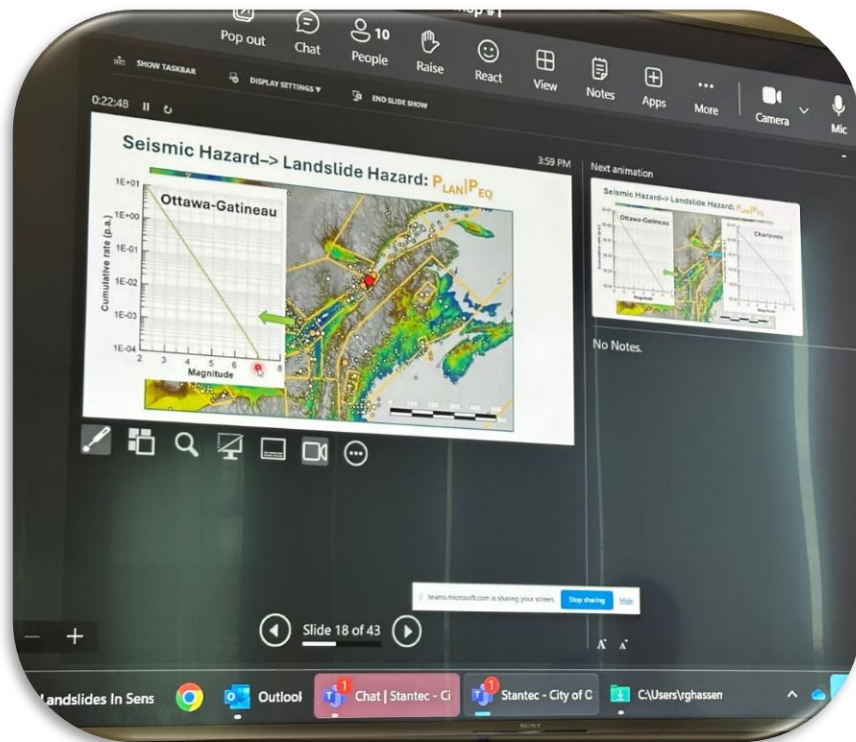
Bear Brook Watershed Study Update



- Sharing of Draft Existing Conditions Reports
- Next Technical Advisory Committee Meeting: November 19th



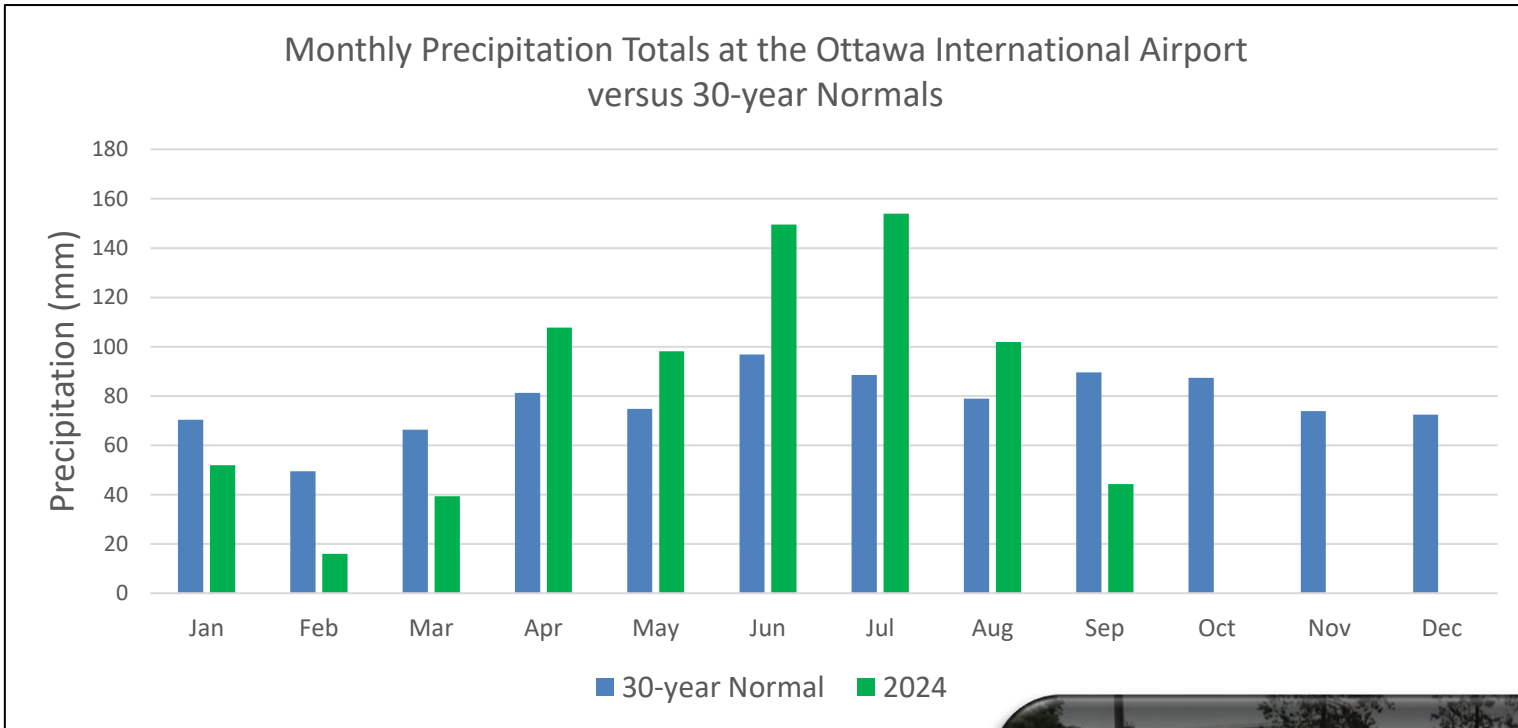
City of Ottawa Retrogressive Landslides Guidelines



- SNC is collaborating with the City of Ottawa in the development of landslide guidelines
- SNC part of City of Ottawa Retrogressive Landslide Technical Advisory Committee (TAC)
- The TAC includes municipal staff, consultants, different levels of government and international experts



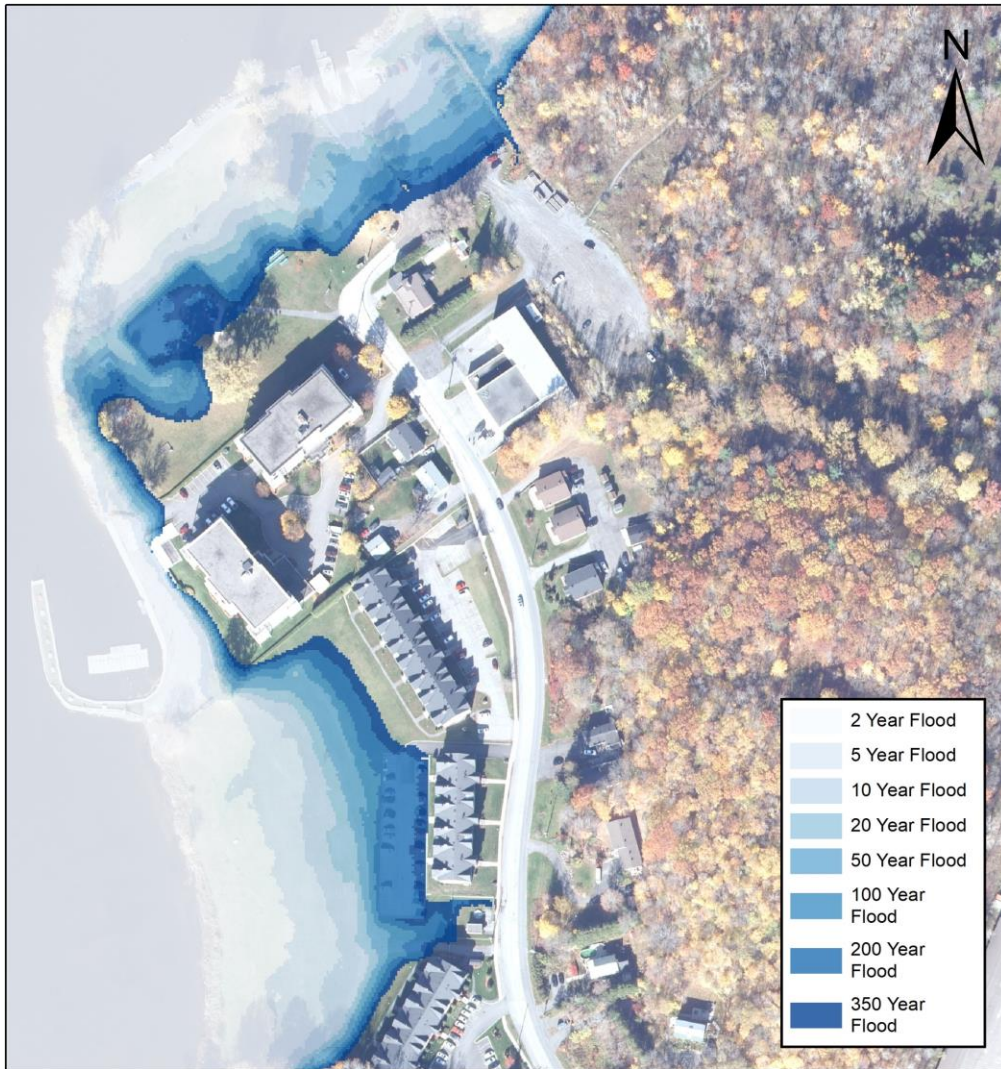
Flood Forecasting and Warning



Flooded City of Ottawa street after Hurricane Debbie



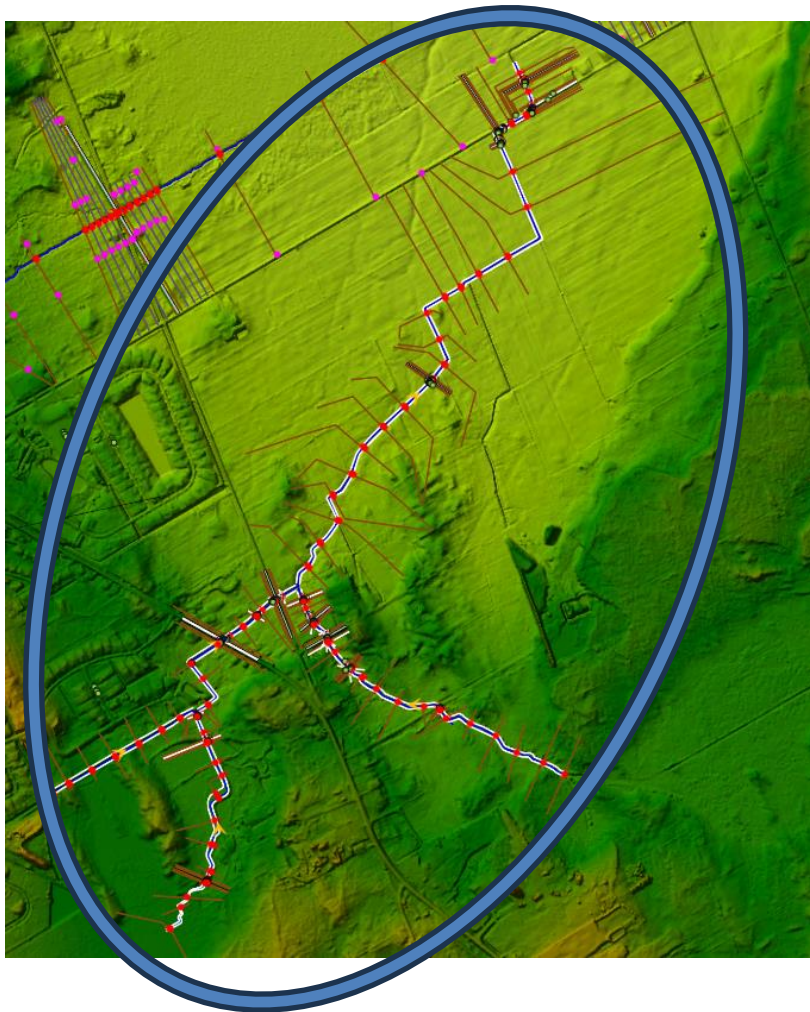
Assessing Flood Risk



- SNC studies different storms to determine vulnerability to flooding
- Use data for municipal services: Flood Forecasting and Warning and Emergency Response Programs



Quaile Creek - Hydraulic Model

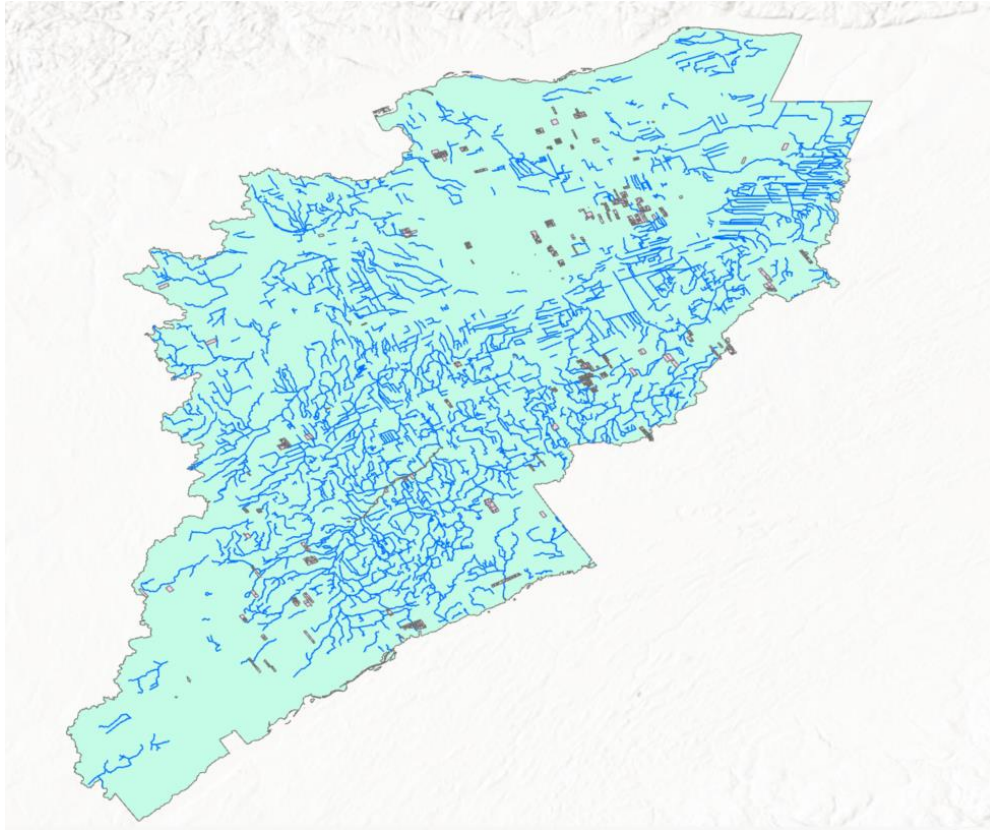


Quaile Creek Hydraulic Model

- Floodplain modeling (100-year storm event)
- Surveyed private and public structures
- Floodplain of additional storm events (2 year, 5 year, 25 year, 50 year, 350 year, ...)



Digitizing Municipal Drains for Improved Accessibility

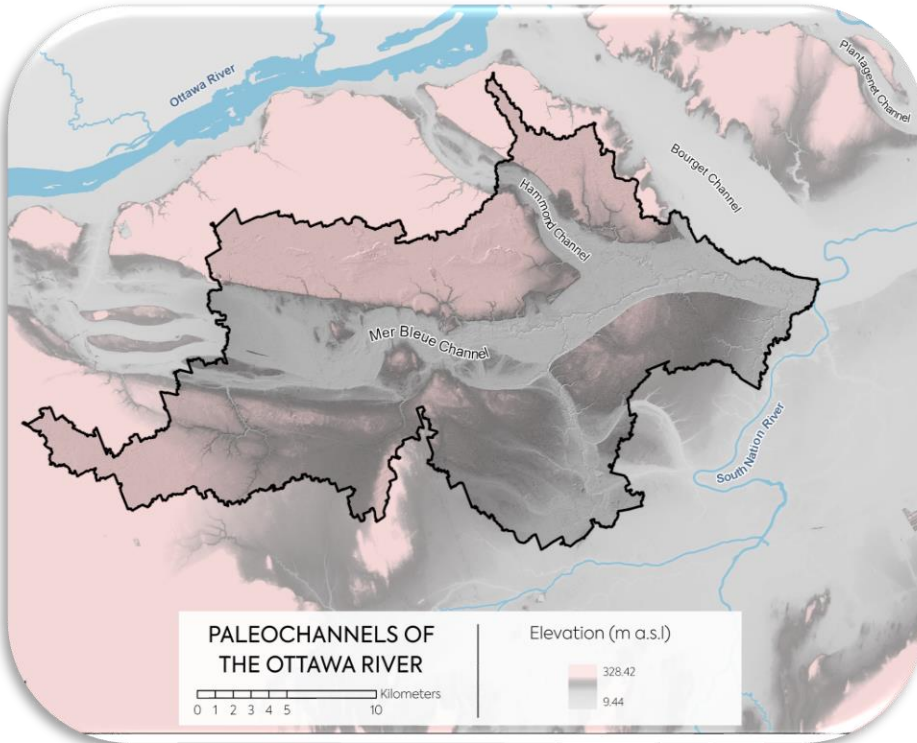


Purpose:

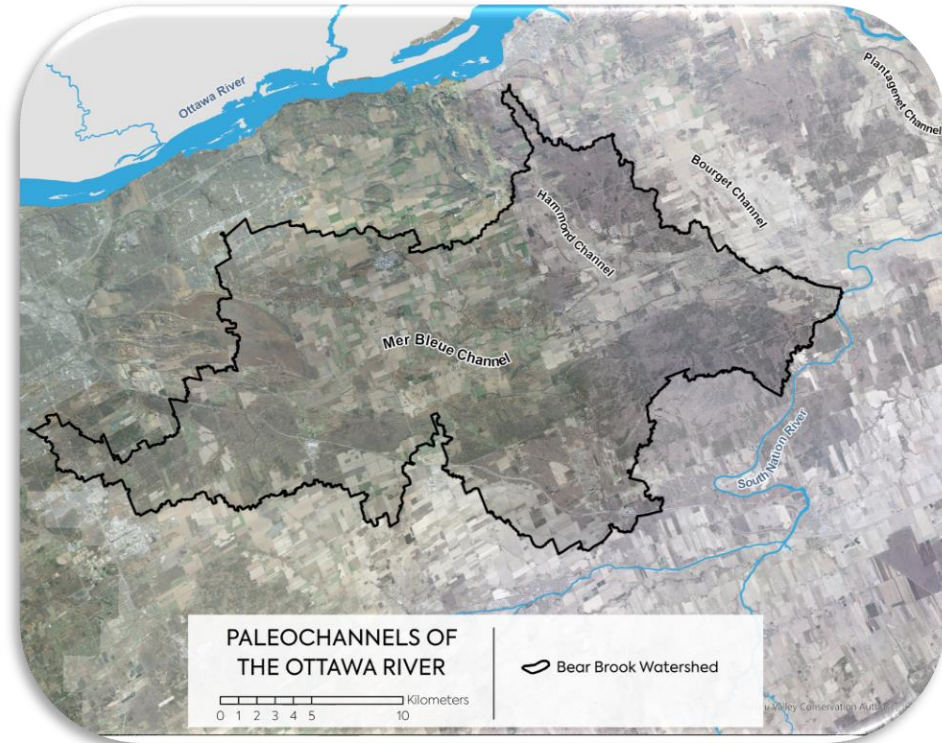
- Easy access to historic-detailed municipal drain information
- Support regulatory tasks such as permits and planning restoration projects



Using GIS for Data Analysis and Reporting



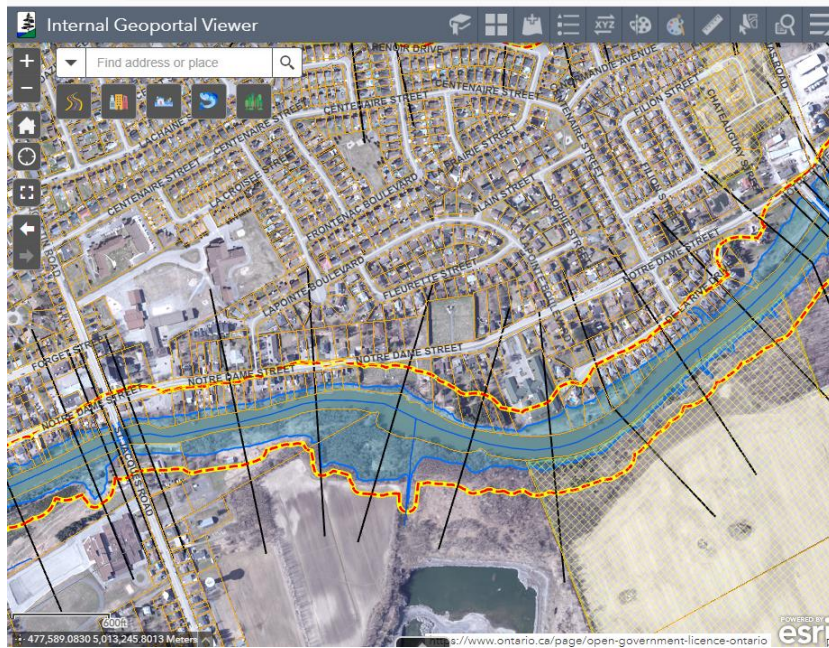
Map of the Paleochannels of the Ottawa River using a hillshade effect



Map of the Paleochannels of the Ottawa River using satellite imagery (DRAPE)

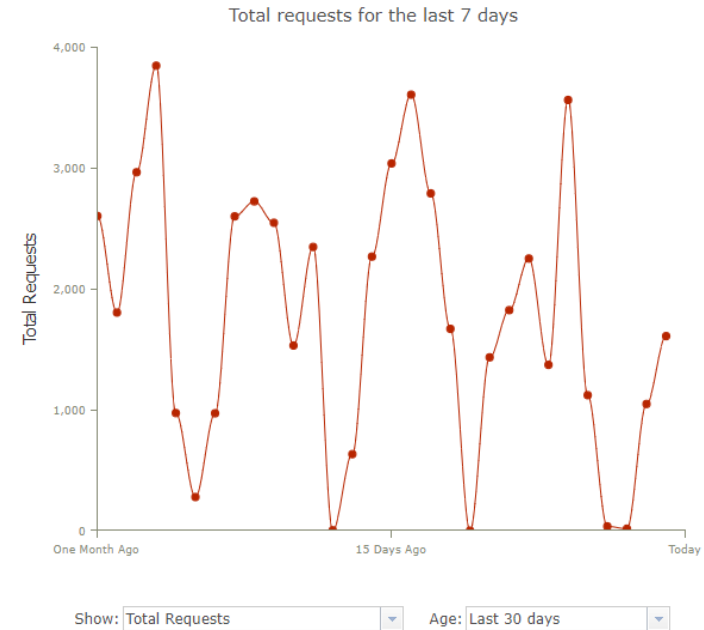


SNC Staff GeoPortal



SNC's Staff GeoPortal

- SNC's Staff GeoPortal connects staff to important reference and technical data



Total Requests for Natural Hazard Data

- Plays an integral role in the daily workflow of many at SNC



Monitoring – Provincial Groundwater Monitoring Network



w363-2 - High Falls Shallow well sampling, Casselman

- PGMN sampling is ongoing: 5 of 13 scheduled wells have been sampled
- Currently working with Bourgeois Well Drilling to re-drill Alfred Bog monitoring well

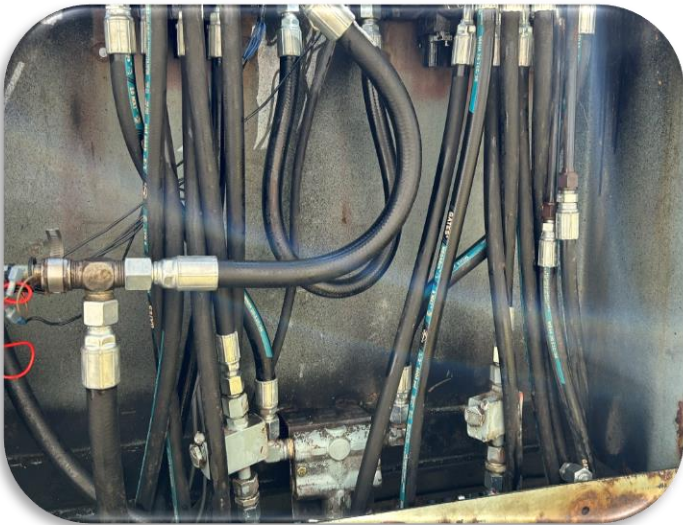


Water Erosion and Control Structures



New control panel, Chesterville Dam

- The log lifter repairs have been completed by A.M.B Lift Inc.
- Buoys have been ordered for Russell Weir and Chesterville Dam (47 total)



Replacement of old hard lines with new flex line,
Chesterville Dam

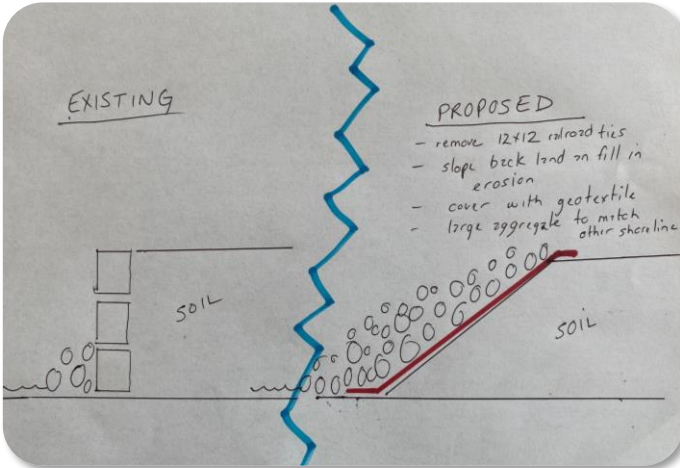
- Site survey is ongoing at Chrysler Dyke
- Working on quotes for rip rap repair at Chrysler Dyke and Chesterville Dam



Shoreline Stabilization Technical Reviews



Shoreline erosion - South Dundas



Pre-Consultation Applicant Proposal

- Review lot constraints (e.g., flood and erosion hazards) using mapping and watershed models
- Review soils to determine if slopes are stable
- Help applicants find aesthetically viable solutions while ensuring people and property are safe from natural hazards



Keeping People and Property Safe



Morrisburg, South Dundas

- Unpermitted development within the St. Lawrence River flood plain
- Contacted the landowner who agreed to voluntarily remove the fill
- Issue is resolved and the project can now proceed via the permitting process

Our Local Environment, We're in it Together.



SOUTH NATION
CONSERVATION
DE LA NATION SUD