



SOUTH NATION
CONSERVATION
DE LA NATION SUD

Project Update

February 20th, 2025





2025 ROMA Conference



- January 19th-21st in Toronto
- Minister Smith responded to two questions regarding his Direction to freeze Conservation Authority fees during Minister's Question Period.



Knowledge Sharing - Invasive Species



Invasive Phragmites mapping on
SNC property in South Dundas

- Ontario Invasive Plant Council Conference
 - **January 16th**
- OIPC Phragmites Working Group Meeting
 - **January 23rd**
- Invasive Species Forum
 - **February 18th-20th**



Great Lakes Education Workshop

Great Lakes Education Workshop

*Connecting to the Great Lakes:
Using the Great Lakes as a
Context for Learning*



Join us for a collaborative Great Lakes Education Workshop designed for CAs, ENGOs, educators, and school board leads. Explore strategies, share resources, and strengthen our collective impact on Great Lakes education and stewardship.

February 12, 2025

London, ON

UPPER THAMES RIVER
CONSERVATION AUTHORITY

Ontario
Ministry of the Environment,
Conservation and Parks



Tour of Upper Thames River Conservation Authority
LEED Platinum Office Building

- Great Lakes Education Workshop to share strategies and strengthen collective impact
- Provincial project to evaluate resource and funding needs



2025 CWRA Climate Change Workshop



2025 CWRA Climate Change Workshop Toronto, ON

- January 31st
- Practical approaches to water resources considering climate change



Township of South Stormont 2025 Information Session



South Stormont Township Office, February 5th, 2025

- SNC staff attended an information session regarding updates to the Ontario Building Code
- The session was presented by EVB and HSP engineering consultants, in collaboration with the City of Ottawa



Flood Forecasting and Warning Information Sessions



FLOOD FORECASTING & WARNING

INFORMATION SESSION FOR CITY OF OTTAWA
STAFF IN PREPARATION FOR THE SPRING FRESHET

Please join us in person:
Rideau Valley Conservation Area Office
3889 Rideau Valley Dr., Manotick, ON

Wednesday, February 26, 2025
10:00 AM to 3:00 PM

(Lunch and refreshments will be provided)



- City of Ottawa: February 26th, in person at RVCA
- Rest of SNC jurisdiction: March 6th, virtual session



Upcoming Outreach and Collaboration



EASTERN ONTARIO
Farm Stewardship Collaborative

- Eco Farm Day
 - **February 22nd** at the Kemptville Campus
- Ottawa Valley Farm Show
 - **March 11th - 13th** at the EY Centre
- Environmental Farm Plan Workshops with OSCIA
 - February 26th & March 5th – Virtual
 - March 18th & 25th – Embrun
 - March 19th & 26th – Virtual
 - April 2nd & 9th – Casselman





Floodplain Mapping for Quaile Creek in the City of Ottawa

WE WANT YOUR FEEDBACK

CONSULTATION NOTICE
Floodplain Mapping for
Quaile Creek within the City of Ottawa

SOUTH NATION CONSERVATION
DE LA NATION SUD

Share Feedback. Have Your Say!
nation.on.ca/consultations

- **Week of March 3**
 - Property owner letters
 - Social media and newspaper ads
 - Webpage online
- **Phone or virtual meetings can be scheduled:**
 - March 17th – 28th
- **In-person meetings can be scheduled:**
 - Wednesday March 26th, 5 PM to 7 PM
at the Greely Community Centre
 - Thursday March 27th, 9 AM to 4 PM
at the SNC Office



Source Protection: Salt Awareness Campaign

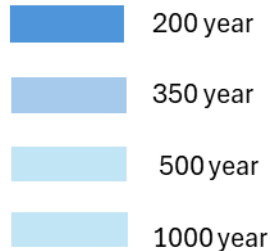
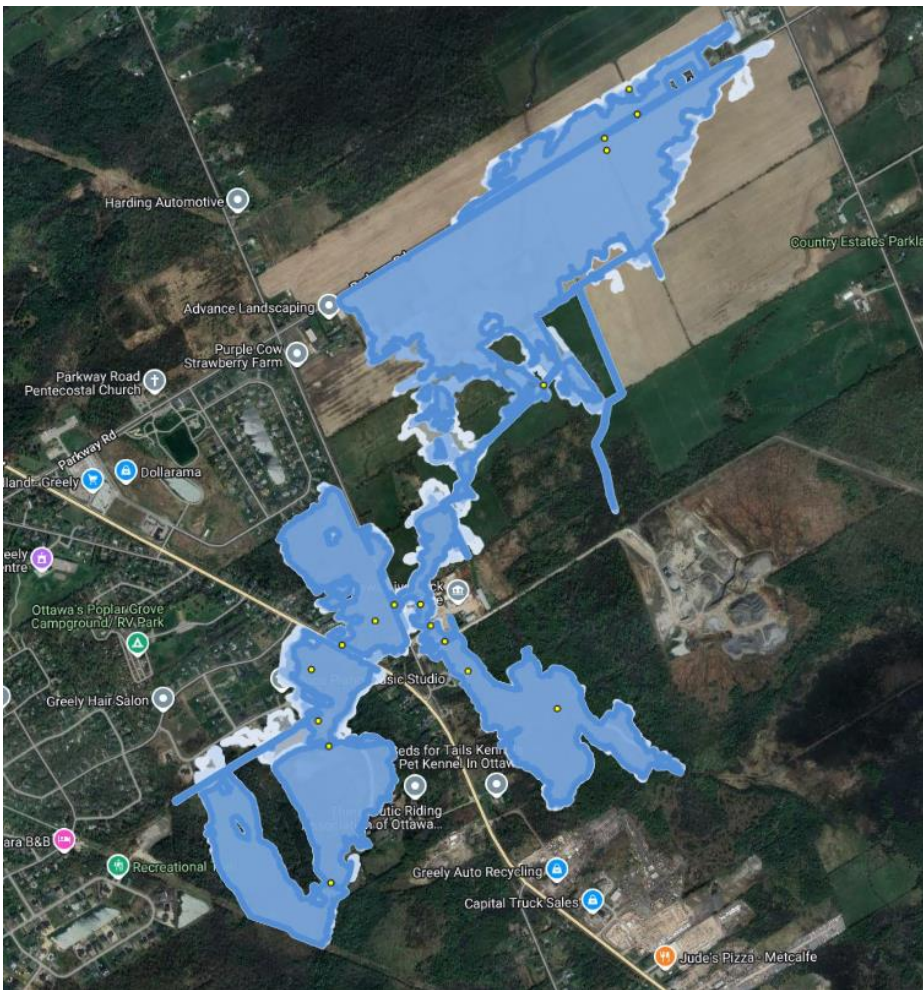


- Salt Awareness displays are set up at libraries and businesses across SNC's jurisdiction
- Residents are encouraged to bring home a Salt Cup
- Includes information on how to "salt responsibly" by using salt sparingly



Quaile Creek Additional Storm Events

- To study the effect of climate change, the storm events of 200, 350, 500, and 1000 year were modeled



Quaile Creek Floodplains for Additional Storm Events



Flood Hazard Identification and Mapping Program



Hawkesbury Creek

- FHIMP reports are due March 1st
- Projects to be submitted include:
 - Bear Brook
 - Quaile Creek
 - South Castor River
 - Hawkesbury Creek
 - South Nation River HydroGeoSphere Model



Water and Erosion Control Structures



Ice forming in stop log bay – Chesterville Dam, Jan 2014



Crysler Dyke, April 2024

- Chesterville Dam
 - Two gain heaters have been purchased
- Crysler Dyke Rip Rap Repair
 - Contractor bidding process is closed
 - Staff are reviewing submissions with their recommendations to follow



Flood Forecasting and Warning Snow Survey



St-Isidore Snow Survey site, Feb. 14th



View from Engineering office windows, Feb. 18th

Friday, February 14th:

- Snowpack depths were averaging ~30 cm
- Snow Water Equivalent has more than doubled since January (~61 mm)
- Last weekend's storm dropped an additional 37 cm in some areas
 - Will further increase the snowpack and Snow Water Equivalent



Provincial Groundwater Monitoring Network



Pleasant Valley Station – as found by SNC staff



Pleasant Valley station – new lock installed

- Manual well water measurements completed
 - Stations in good state
- Two stations targeted by thieves: Cass Bridge and Pleasant Valley
 - Batteries were stolen as well as a solar regulator



Winter Water Quality Sampling



PWQMN sampling site in Chesterville
North Dundas

- Ministry of Environment, Conservation and Parks offers winter sampling for interested Conservation Authorities
- 8 samples can be taken, flexible and weather dependent

Streamlining the Permitting Process with Municipal Partners



Permit inspection for a culvert replacement
City of Ottawa

- Approvals staff met with the City of Ottawa Infrastructure and Water Services Department to prepare for the upcoming 2025 road construction season and culvert replacements
- Discussed streamlining batches of permit applications and pre-consultation for culvert renewal projects to ensure quick review and adherence to timelines



SDG/SNC Activities



McRae Bridge

- SNC is working with the SDG engineers on the McRae and Hess Creek Bridge rehabilitation projects
- Staff are actively participating in meetings to provide guidance on the requirements for the proposed projects



J. Henry Tweed Park Erosion Protection

At Bridge, Facing Downstream.



At Bridge, Facing Upstream.



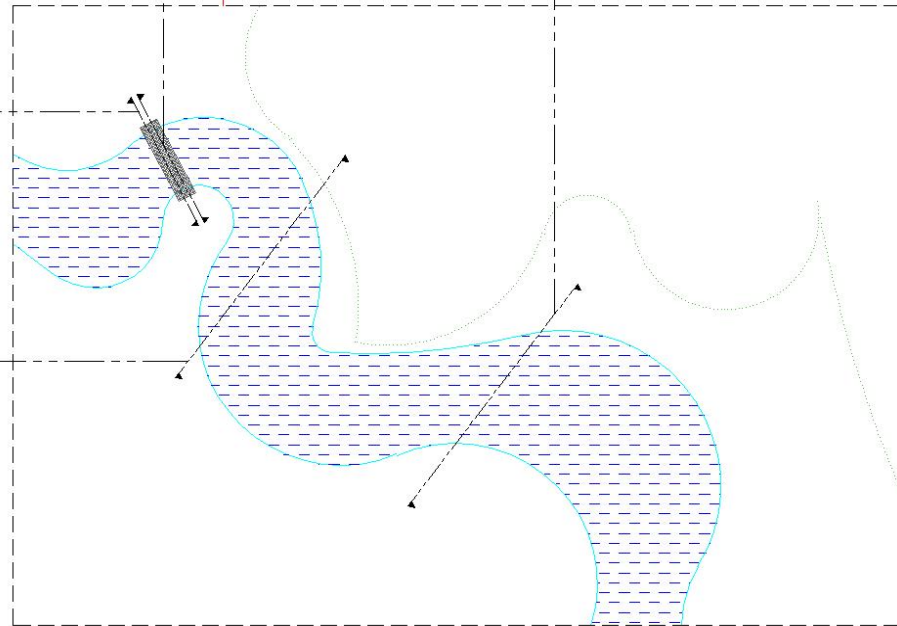
Downstream of Bridge, Coir Logs & Log Vane Location.



TWEED PARK WATER COURSE

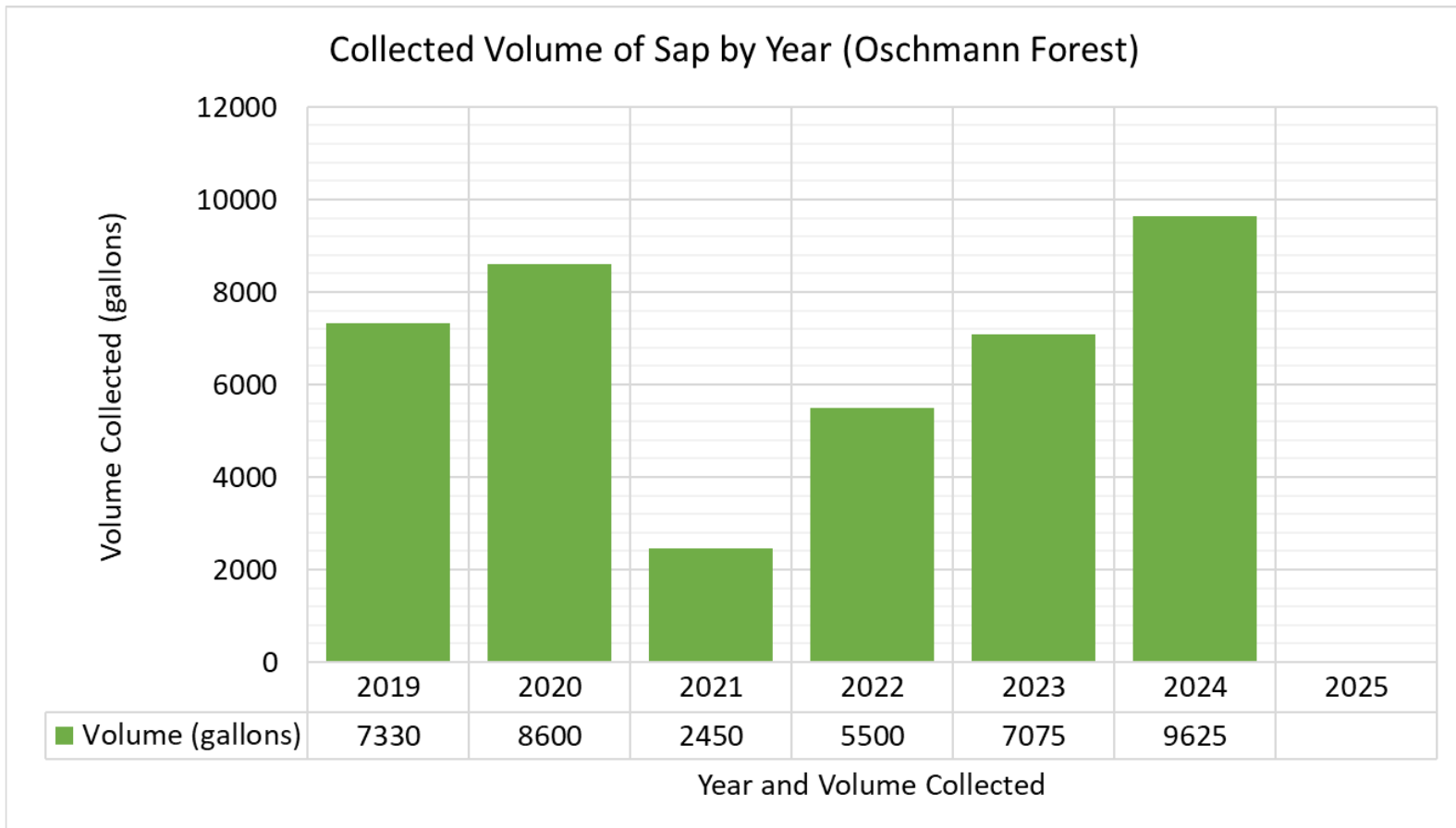


Downstream of Coir Logs & Log Vane.





Oschmann Forest – Maple Season

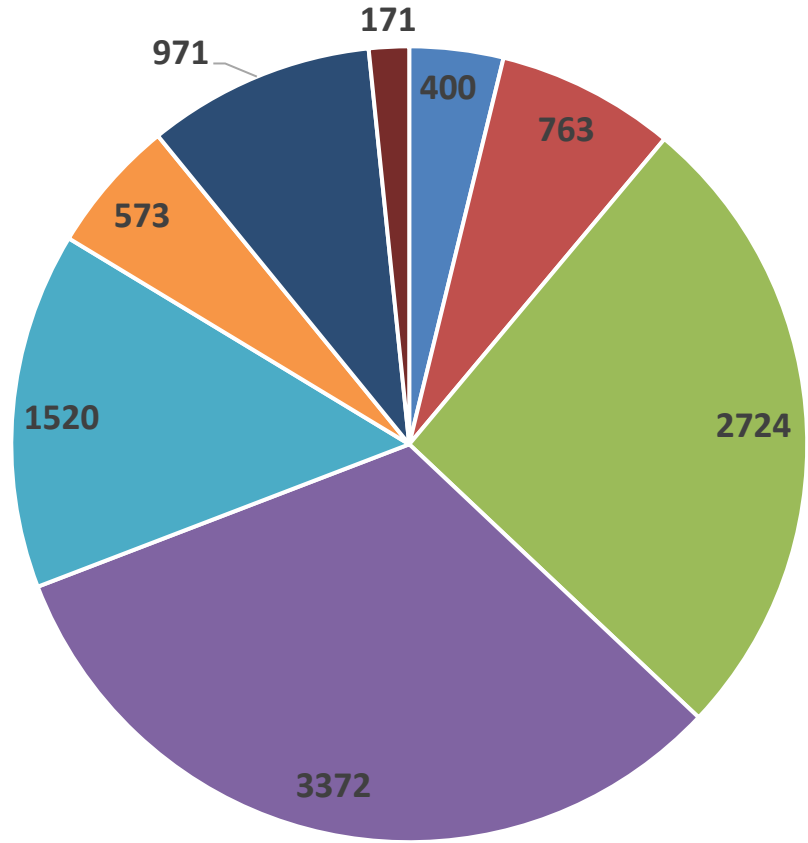


- Trees are being tapped by SNC staff tomorrow
- 525 taps to be installed
- Maple Education Program available



February Conservation Area Stats

Number of visitors in February



- Two Creeks Forest
- Bob Graham Forest
- J. Henry Tweed
- W.E. Burton
- Warwick Forest
- Oschmann Forest
- Findlay Creek
- Reveler

Our Local Environment, We're in it Together.



SOUTH NATION
CONSERVATION
DE LA NATION SUD